

# **BALLINASLOE SOCIAL SERVICES CHILDCARE FACILITY**



# **CHILD SAFEGUARDING STATEMENT**

# Child Safeguarding Statement

## 1. NAME OF SERVICE AND ACTIVITIES PROVIDED

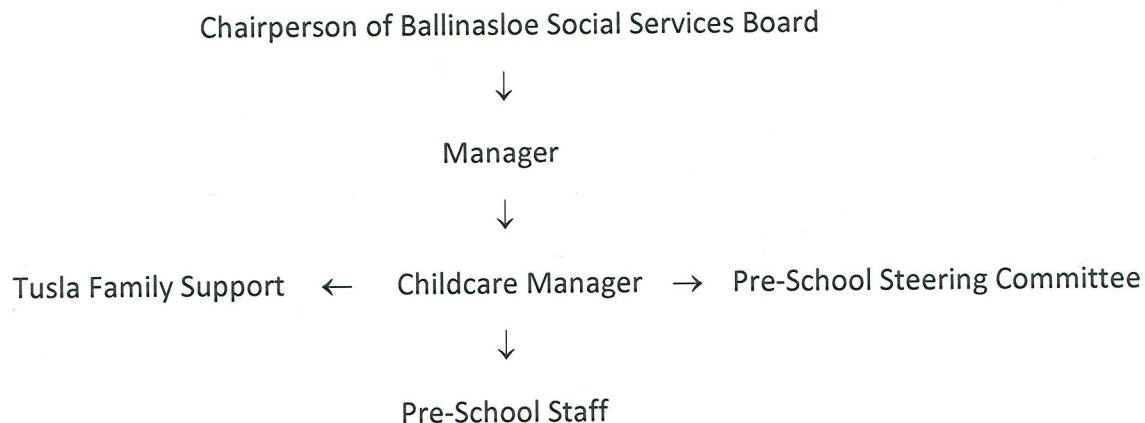
Ballinasloe Social Services Pre-School is registered pre-school providing the following services for children aged 3 years to 6- years:

ECCE and CCS sessional services 5 morning and afternoons each week

Ballinasloe Therapeutic Learning Centre is an early intervention service providing the following services to children aged 0 years to 8 years and their parents:

Individual sessions with child and family, as referred by Tusla

The management structure is:



## 2. COMMITMENT TO SAFEGUARD CHILDREN FROM HARM

- Our Service is committed to safeguarding the children in our care and to providing a safe environment in which they can play, learn and develop.
- Our service believes that the welfare of the children attending our service is paramount. We are committed to child-centred practice in all our work with children.
- We are committed to upholding the rights of every child and young person who attends our service, including the rights to be kept safe and protected from harm, listened to, and heard.
- Our policy and procedures to safeguard children and young people reflect national policy and legislation and are underpinned by *Children First: National Guidance for the Protection and Welfare of Children*, DCYA, 2017, *Child Safeguarding: A Guide for Policy, Practice and Procedure*, Tusla, 2018, and the *Children First Act 2015*.
- Our policy declaration applies to all paid staff, volunteers, committee/ board members and students on work placement within our organisation. All committee board members, staff, volunteers and students must sign up to and abide by the

